

# HOW WILL YOUR GARDEN CITY GROW?





**DID YOU KNOW...**

The skeleton of a Straight Tusked Elephant  
was found in Castle Hill?

# CONTENTS



- 4-5      Welcome to Ebbsfleet!
- 6-11     What to see and do here
- 12       How do I...?
- 13       Helping your garden grow
- 14-15    Edible Ebbsfleet
- 16-17    Building this city for you
- 20       Creativity for everyone
- 21       Putting the garden in your city



# WELCOME TO EBBSFLEET!

Whether you have just moved to the area or have lived here for some time already, this welcome pack provides you with a little more information about the community you live in. It also helps you to get the most out of your local area, with handy maps so you can find your way around.

## What's special about living here?

Ebbsfleet is the first Garden City to be built in the UK for 100 years, so by moving into the area you're already making history and are part of something really special that's unlike anywhere else.

You may have heard your local area referred to by lots of different names, such as Ebbsfleet, Weldon, Ebbsfleet Valley, Springhead Park, Northfleet and Swanscombe, which makes it tricky to know what's happening here. All these areas are part of, or close neighbours to, the emerging Ebbsfleet Garden City.

### DID YOU KNOW...

The original Garden Cities include  
Welwyn and Letchworth



## But what is a Garden City?



*The Garden City concept was invented by Ebenezer Howard in the early 1900s. It is the result of the industrial revolution*

*and housing reform at that time which also led to Cadbury's relocating its chocolate factory from inner city Birmingham to the leafy outskirts, creating the suburb of Bournville (home nowadays to Cadbury World). The great and good of the day promised to end poor quality housing for factory workers and build places in which people could live, work and prosper, that generated a sense of wellbeing, community and prosperity.*





No man ought to be  
condemned to live in  
a place where a rose  
cannot grow.

GEORGE CADBURY (1839-1922)

## Ebbsfleet Development Corporation

Ebbsfleet Development Corporation aims to build a city that meets your needs and bring you a home based on 'Garden City' principles in a modern-day environment. We want to prioritise your wellbeing and actively encourage your participation in Ebbsfleet's growth and future. We know this approach leads to neighbourliness and building a sense of pride in where you live. And we want to make you feel part of something special by providing you access to new social and public spaces that make it a great place to live, work and play for the 21st century.

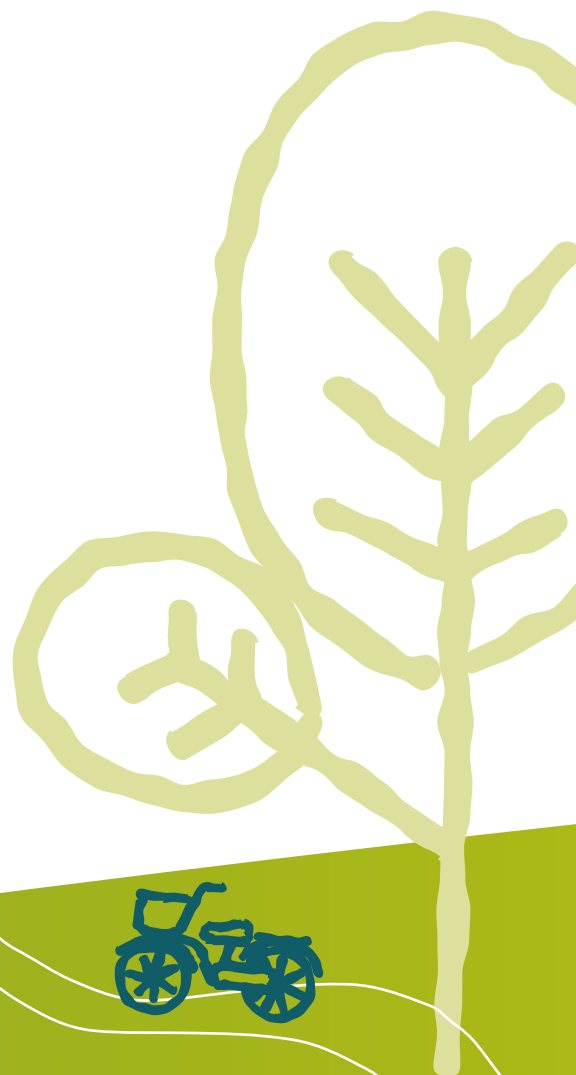
In line with the Garden City ethos, we are working with local partners to ensure that the local community benefits from the planned growth. We do this by providing the opportunity for you to be involved in the design and development of parks, open spaces and community buildings both now and in the future through the Ebbsfleet Garden City Trust.

You can find out more about what we do, the Ebbsfleet Garden Trust and how to contact us on pages 16-19, or head to our website to read more on our vision.

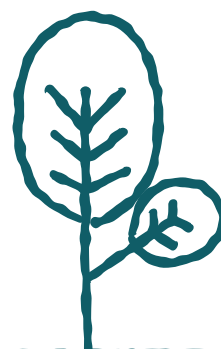


The Ebbsfleet Development Corporation Team

THANK YOU FOR JOINING US  
ON THIS FANTASTIC JOURNEY.



# WHAT TO SEE AND DO HERE



There are so many things to see and do in this thriving community and wider local area, whether you're a bookworm, a shopaholic, a historian, a sports enthusiast, a nature lover or a water baby.

## Getting around

Getting around Ebbsfleet Garden City is getting better. One of the reasons that Ebbsfleet is built at this location is down to just that – the location. It's linked to so many places, with enviable national and international road and rail links, but it doesn't stop there.

We have plans to provide a high-quality network of streets, public transport systems and walking and cycling links to help you be active, enjoy shorter journeys within the local area, reduce car dependence and minimise pressure on the local road network.



2020 saw the launch of 'Arriva Click Ebbsfleet', an on-demand minibus service which covers a number of locations in and around the Garden City. Just download the **Arriva Click app** to book your ride and away you go!

If you prefer travelling by car then a rental might be right up your street. The enterprise car club has a range of fuel-efficient, hybrid and electric vehicles. Download the **Enterprise Car Club app** to find out more.

Soon nearly all homes will be within a 5 minute walk of a bus stop where you can catch the Fasttrack service all the way to Dartford town centre, Bluewater, Ebbsfleet International and Gravesend Station.

The Fasttrack bus service will start running through Whitecliffe late 2022/ early 2023, so keep your eyes peeled for the new route. Download the **Kent Connected app** to find out more.



### WATCH THIS SPACE

#### Walkways and cycleways

will be embedded across the City to enable active, healthy outdoor lifestyles. Promenade walks will be built to give residents access to the waterfront in this area for the first time in a century.

#### Don't forget to take your pocket map when you're out and about in Ebbsfleet.

We realise there's a lot to take in when you move to a new place and knowing where you are and how to get to places is important. So we've made this handy map so you can see what's happening where, and how to get there. **You'll find it in your welcome pack.**







## A green and blue network of new city parks

There are many parks and open spaces planned for your use as the city grows, from small 'pocket parks' in between streets, to centralised neighbourhood parks and parklets, which are small 'meanwhile' spaces whilst the parks are being constructed.

We will create a network of new, city-scale parks and open spaces, connecting Ebbsfleet's blue waterscapes and green landscapes to bring the garden into all areas of the city.

This network of parks, open spaces and green streets and corridors will provide beautiful and functional recreational spaces. We'll create habitats that support local wildlife and ecology and provide a practical way of managing our water.

**Find out more here on our website.**

*"The Book Exchange is in Castle Hill, located outside the Community Centre. You may be a bookworm, or so busy you could not possibly think of picking up a book and reading it. Challenge yourself and try something new. If you have some great books lying around but fancy a new read, pop down and swap, or simply take a book and give it a go. I am guilty of really enjoying a book and only reading it once for it then to collect dust. Trying something new is my first top tip! It's so easy to be stuck in the same routine. Moving out of your comfort zone may seem scary, but it is pretty exhilarating. Reading can often be seen as boring, but it could be just the right amount of escapism you may need."*

**Katie, a Castle Hill resident.**

Katie adds, "There are also lots of local paths to explore: The newly opened pathway that runs down Castle Hill Drive behind Norman Lane is a great shaded spot for walking. It's a lovely downhill walk finishing by the Co-op. If you are lucky enough, you may have a brief encounter with our new local celebrities, the ducks! If you would prefer a walk where it's a little flatter, cross the road at the top of Castle Hill Drive and enjoy the gravel path surrounded by grass, with newly installed children's play (my kids love this). The path leads to a 'Grow Your Own' project just off Mercer Avenue. There are lots of things to catch your eye around here".

The wide range of parks and open spaces will be equivalent in size to more than **300** football pitches, or **42** Bluewater shopping centres



Penny Marsh describes the local friendly running group, Sunday Active:

**A friendly running group where no-one gets left behind – we aim to make our sessions fun and suitable for all abilities.**



# A CITY-WIDE PROGRAMME OF ACTIVITY

Whether you are into running, cycling, walking, scouting, scooting, gardening, chilling or reading, we've got you covered.

## LOCAL SERVICES

### LEISURE CENTRES

- Cygnets Leisure Centre (Gravesham)
- Cascades Leisure Centre  
Swanscombe Leisure Centre  
gcl.co.uk
- Fairfield Leisure Centre  
placesleisure.org

### GROCERY STORES AND SHOPPING CENTRES

- Co-op Local Castle Hill
- Co-op Local Ebbsfleet Green
- Co-op Local Swanscombe
- ASDA, Crossways Blvd, Greenhithe
- ASDA Thames Way, Gravesend
- ALDI, London Road, Gravesend
- Sainsbury's, Wingfield Park
- Orchards Shopping Centre, Dartford
- Thamesgate Shopping Centre, Gravesend
- Bluewater Shopping Centre
- M&S, Bluewater
- Waitrose, Bluewater

### HEALTH SERVICES

- Delmergate Pharmacy, Castle Hill
- Kent and Medway Secondary Care Mental Health Services

### LOCAL LIBRARIES

- Swan Valley Library/Discovery Centre, Swanscombe

### TRAINING AND EMPLOYMENT

- CAS Community Solutions
- Learning Shop
- The Big Local

## SPORTS

### BABY BALLERS

- Castle Hill
- BabyBallersCastleHill

### BACK TO NETBALL

- Ebbsfleet Academy
- Swanscombe
- Every Tuesdays 6.30-7.30pm
- irnc@hotmail.co.uk
- irnc.co.uk

### BADMINTON CLUB

- Gravesend
- Methodist Church Hall
- 07831 264424
- roberthardy33@gmail.com

### BETSHAM CRICKET CLUB

- betshamcc@gmail.com
- betsham.play-cricket.com
- Gravesend

### BECKET SPORTS CENTRE

- Dartford
- 01322 280646
- becketssports.co.uk

### BOOGIE BOPS

- BoogieBops

### BUGGYBEATS AND SATURDAY BOOTCAMPS

- BODYBLITZ FITNESS
- Emma Staples
- EmmastaplesPt

### CLUB CYCLOPARK

- 01474 320587
- cycloparkclub@gmail.com
- clubcyclopark.com

### DARTFORD CRICKET CLUB

- Dartford
- 01322 225152

### DARTFORD VALLEY COMMUNITY RUGBY CLUB

- DartfordRugby

### DARTFORD VOLLEYBALL CLUB

- dartfordvolleyballclub.co.uk
- dartfordvolleyballclub

### GRAVESEND GRAMMAR SCHOOL BADMINTON

- 07764 182854

### GRAVESEND ROWING CLUB

- 07497 810 043
- secretary@gravesendrc.co.uk
- gravesendrc.co.uk
- GravesendRowingClub
- 07497 810 043

### GRAVESEND LADIES HOCKEY CLUB

- 07841 195389
- info@glhc.co.uk
- glhc.co.uk
- gravesendladieshockeyclub

### GRAVESEND SAILING CLUB

- 07506 367699
- gravesendsc.org.uk

### JUDO JIM'S JUDO ACADEMY

- Gravesend
- 07710 346372
- info@judojim.org

### GRAVESEND RUGBY FOOTBALL CLUB

- Donald Biggs Dr, Gravesend
- GravesendRFC

### EBBSFLEET UNITED FOOTBALL CLUB

- ebbsfleetunited.co.uk

## FISHING

### DDAPS

- Dartford
- www.ddaps.org

### FLEET GYMNASTICS

- fleetgymnastics.co.uk

### SUNDAY ACTIVE

- 9am at the Castle Hill community Centre for the run group and health walk
- HiIT session by the tennis courts
- penny@seba-baptist.org.uk
- EbbSundayActive

### TMG FITNESS

- Castle Hill
- tmgfitnessandpt

### YOGA AND PILATES CLASSES

- Castle Hill
- yogaandpilateswithemma.co.uk

## COMMUNITY

### CAMBRIA SEA SCOUTS

- Greenhithe
- cambriaseascouts.org

### FRIDAY COFFEE MORNINGS

- 10:45 – 12:15pm
- Castle Hill Community Centre
- Valleypenny@seba-baptist.org.uk
- Ebbsfleet Coffee Morning

### ROTARY CLUB

- Northfleet-with-Ebbsfleet-Garden-City-Rotary-Club

### SCOUTS AND GIRL GUIDES

- kentscouts.org.uk
- girlguidingkentwest.co.uk





## A healthy place to live

Ebbsfleet is part of the Healthy New Towns, a project spearheaded by the NHS with the aim of promoting and supporting a culture of healthy living within a new community.

We've tons of activities and community projects that form part of this, including Edible Ebbsfleet (more on that on pages 14-15) and our 'no walls' community gardens, which provide fresh vegetables and flowers for anyone who lives in the community. There's also organised walking, fitness and running activities, along with community events where everyone gets together.

The aim is for a sense of overall wellbeing – not just fitness – which contributes to happiness and neighbourliness, making for a great place to live.



A world-class health, education and innovation centre is proposed for a site close to Ebbsfleet International station. This is planned to include a Health and Wellbeing Hub, Diagnostic Centre and Education and Innovation space.



**The activities bring residents and groups together and also find out what residents want to see in their local area.**

EBBSFLEET RESIDENT

**These activities bring people together and we build up new friendships.**

EBBSFLEET RESIDENT

**Moving to Ebbsfleet Garden City has been the right decision for me, and I feel part of something new and exciting.**

SYLVIA - COMMUNITY BOARD MEMBER

**You can meet people and connect with people and nature.**

EBBSFLEET RESIDENT

**I joined the Community Board because I wanted to help shape the place where my family and I are going to live, and to get to know what is going on in my area.**

COMMUNITY BOARD MEMBER

**I got involved in the Community Board to help shape the future services and experiences of those living in the Garden City. Being part of a strong, diverse and welcoming community is something I feel very strongly about.**

MARK - COMMUNITY BOARD MEMBER

# DAYS OUT FURTHER AFIELD



Ebbsfleet, with its international train station, is an unrivalled location for days out for all the family or hobbyists to enjoy. Here are a few of our favourites.



## Bluewater

Bluewater is a shopaholic's dream! There are over **300 stores**, from your high street staples to high end gems and independent boutiques, in a beautifully designed indoor shopping centre. It's also one for the foodies, as there are over **50 places to eat**, from food court burritos, sandwiches and sushi to numerous Italian restaurants, burger joints and Mexican food. And we should mention there's an entire cinema, **Dinotropolis** – the kids' dinosaur adventure heaven and **Gravity trampoline park** too.  
[bluewater.co.uk](http://bluewater.co.uk)



## Diggerland

Diggerland is the perfect destination for action-packed fun for families, where guests of all ages can ride, drive and operate real JCB diggers and enjoy digger-themed rides in a safe and family-friendly setting. Diggerland is in Medway Valley Leisure Centre. One to bookmark for the school holidays? We think so!  
[diggerland.com](http://diggerland.com)



## Kent Life

Kent Life is an ode to rural Kent heritage and everything that makes it the Garden of England. Get back into nature with farmyard animals, including sheep, pigs, donkeys and more, or roam through orchards of the apple trees that are synonymous with Kent. Step into the history of Kent in the Vintage Village, which takes you on a history tour with the people who grew the Garden of England from the ground up.  
[kentlife.org.uk](http://kentlife.org.uk)

As well as unforgettable days and nights out in London in under 20 minutes from Ebbsfleet international, we are also close to some fantastic local picnic spots and beaches.

**Eagle Heights, Eynsford**  
[eagleheights.co.uk](http://eagleheights.co.uk)

**Mount Vineyard, Shoreham**  
[themountvineyard.co.uk](http://themountvineyard.co.uk)

**Rochester Castle**  
[english-heritage.org.uk](http://english-heritage.org.uk)

**Canterbury**  
[canterbury.co.uk](http://canterbury.co.uk)

## Country parks & beaches

**Jeskyn's Community Woodlands**

**Northfleet Urban Country Park**

**Shorne Woods**

**Whitstable Beach**

**Ramsgate Beach**

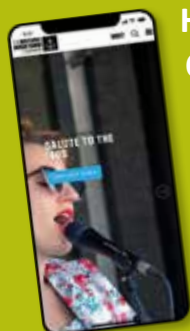


## Cyclopark

Cyclopark is fast becoming one of the leading multi-sports centres in the South East, catering for every cyclist's desires, from tarmac courses for road bikes, a first-class race track for BMX and 6km of track for mountain biking, designed by the World Cup trail designer. And it's not just for cyclists – skaters can go crazy on the spectacular flood-lit

skatepark. In 2017, Olympic gold medallist Dame Kelly Holmes chose Cyclopark as the location for her new café, 1809 Active.

[cyclopark.com](http://cyclopark.com)



## History in the making at Chatham Maritime

The Historic Dockyard Chatham spent over 400 years as one of Britain's most important Royal dockyards. It was crucial in everything from launching ships for Nelson in the Battle of Trafalgar to constructing World War II destroyers and building nuclear submarines during the Cold War, making the Historic Dockyard

a true English legend. Historic Dockyard has also been the backdrop to many a star-studded production, from the new Sherlock Holmes, 2012 Les Misérables or even our own British TV staple, Call the Midwife.

[thedockyard.co.uk](http://thedockyard.co.uk)



## Gin lovers' paradise, Copper Rivet Distillery

Set in the glorious Victorian Pump House No.5, Copper Rivet Distillery is Kent's only spirit maker. It focuses on producing small batches of exceptional gins, whiskies and vodkas from scratch, inspired by the innovative and creative heritage of the Historic Dockyard itself. Take a tour and experience the entire distillation process

from grain to glass at one of the few English distilleries to offer the experience. If you get lucky with a sunny day, enjoy your Dockyard Gin and Tonic with sparkling sea views overlooking the river Medway.

[copperrivetdistillery.com](http://copperrivetdistillery.com)



## Meet a Disney Princess

Pocahontas is a figure we all know, but not many are aware of her connection to Gravesend. The Native American colonial figure was taken ashore at Gravesend after she became mortally ill during a colonial propaganda campaign in England.

Known to most as the heroic Disney princess, her story is part of a complicated colonial past, but now people can pay tribute to her and understand the person behind the story. See for yourself the stunning bronze Grade II listed statue that depicts her at her grave at St George's Church in Gravesend.



## For the small swashbucklers – pirate adventure golf

Pirate Cove Adventure Park in Bluewater is a great day out for all the family.

With two 18-hole mini golf courses and pedalos, Pirate Cove is arguably the best adventure golf centre in Europe. Climb aboard Captain Jim's very own pirate ship or venture around the smugglers' caves where legend says Captain Jim has hidden

his treasure. Feeling brave? Impress the Captain and take on the two 18-hole challenges at your peril. Off the course, you can continue the adventure and take to the water with our pirate boating experience.

[adventureexperience.co.uk](http://adventureexperience.co.uk)



# HOW DO I...?



It can be tricky when you move to a new location to work out how to find out some of the simple but essential things you need, like local council services, schools and health centres.

**In essence, if you live in the western section of the Garden City, you're in Dartford Borough and if you live in the eastern section, you're in Gravesham Borough.**



The boundary line runs roughly down the middle of the Garden City, close to Ebbsfleet International Train Station.

Your council tax payments will be collected by the Borough Council. Local authorities carry out core services including refuse collection, parking enforcement on adopted roads and highway maintenance.

When you move to the Garden City you will also be a Kent County resident. The County Council provides services such as maintaining major roads and is also the education and social care authority covering Ebbsfleet.

## My local school

There are some fantastic schools in the local and wider area. We know that schools are a big part of the equation for many families when they move to a new area, so we wanted to make sure you have all the information you will need about future schools in Ebbsfleet Garden City, as well as the area's existing local schools.



Scan the QR code to find your local school **on our website**, where you can see the new schools being built across the Garden City, including primary, secondary and special school provision.

If you have a question about schools and want to talk to someone about it, Kent County Council is the local authority responsible for state school places and you can contact them at: [kent.gov.uk](http://kent.gov.uk)

For the little ones, there are plenty of nurseries on offer too, some of which are listed below. (Kent County Council has a comprehensive list on its website [www.kent.gov.uk](http://www.kent.gov.uk))

**Cherry Pips Nursery**  
[cherryorchardprimaryacademy.org.uk](http://cherryorchardprimaryacademy.org.uk)

**Ebbsfleet Green Nursery**  
[ebbsfleetgreenprimary.org.uk](http://ebbsfleetgreenprimary.org.uk)

**Scallywags pre school**  
*Northfleet*  
[scallywagspre-school.co.uk](http://scallywagspre-school.co.uk)

**Kids Inc Nursery**  
*Bluewater*  
[kidsincnurseries.co.uk](http://kidsincnurseries.co.uk)

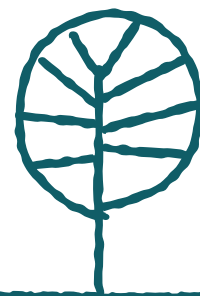
**Snowden Hill Nursery**  
*Northfleet*  
[meadowsnurseries.co.uk](http://meadowsnurseries.co.uk)

**Bright Horizon Nursery**  
*Swanscombe*





# HELPING YOU AND YOUR GARDEN GROW



Ebbsfleet is somewhere for everyone to grow, develop and learn by getting involved in all that we have to offer in the local community. There are many projects and initiatives aimed at supporting and involving local people in their local areas.



## Grow your own

Grow your own garden in the city with help from our gardening guide and seed packets to get you started. You'll find it all in your welcome pack folder.

## Pick up a free tree!

Our 'Greening the Garden City' initiative is aimed at getting a free tree into your garden this Autumn/Winter.

We will be holding a series of giveaway events during tree planting season from November 2021 to March 2022, where Garden City residents will be able to collect a free tree – or a perennial plant for your balcony or window if you live in an apartment or flat. Trees will be easily transportable at about 2m tall.

Your tree will come with all the information you need to plant and care for it. We are also engaging with local community champions to take part in the giveaway events. We are confirming plans for tree collection, so keep an eye on our website and social media platforms for more information.

## Find out more

Join the conversation online:

- f Castle Hill Facebook group
- f Ebbsfleet Green Facebook group
- f Springhead Park Facebook group

Or our city-wide Facebook group

- f ebbsfleetgardencity



For the latest Garden City news and community info, head to [our website](#) or scan the QR code.

Here you can find out more about everything we're doing to collaborate with local people and support local communities, including:

- our Community Investment and Creative Ideas funds
- our approach to health provision in Ebbsfleet
- our Community Board
- our work around arts and culture
- our 'Edible Ebbsfleet' community garden project
- existing, new and future schools plans
- and much, much more

## Have your say!

### Help us create the place you want to live in.

There are so many new projects and developments happening all the time in the Garden City as it grows and continues to develop. Help us to create the best Ebbsfleet by visiting our



Ebbsfleet Commonplace site. It's an online platform with a range of interactive tools so you can co-create the Garden City with us. Have your say and give us your ideas!

Scan the QR code or visit [ebbsfleet.commonplace.is](https://ebbsfleet.commonplace.is)

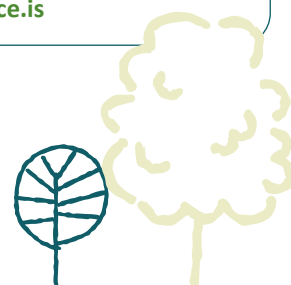


GET IN TOUCH



[contactebbsfleetdc@ebbsfleetdc.org.uk](mailto:contactebbsfleetdc@ebbsfleetdc.org.uk)

0303 444 2586







# EDIBLE EBBSFLEET



Join the edible Ebbsfleet movement



Edible Ebbsfleet is part of our Healthy New Towns initiative, a partnership with NHS England and now a community movement led by local residents, pupils and workers.

Members of the community support each other to develop a series of small-scale food growing initiatives along local streets, parks and gardens, encouraging neighbours to pick, cook and eat the produce.

Through our Healthy New Towns work we aim to put you in control of managing your own health and wellbeing, by providing the information and tools to help make healthy lifestyle choices.

Ebbsfleet is the largest and most ambitious of ten NHS Healthy New Towns pilot communities which explore how to achieve improved long-term health outcomes through the design of the Garden City and its services. We work with you to create a vibrant community with places to go and things to do, where everyone benefits through better housing, education, employment opportunities and connecting to nature.

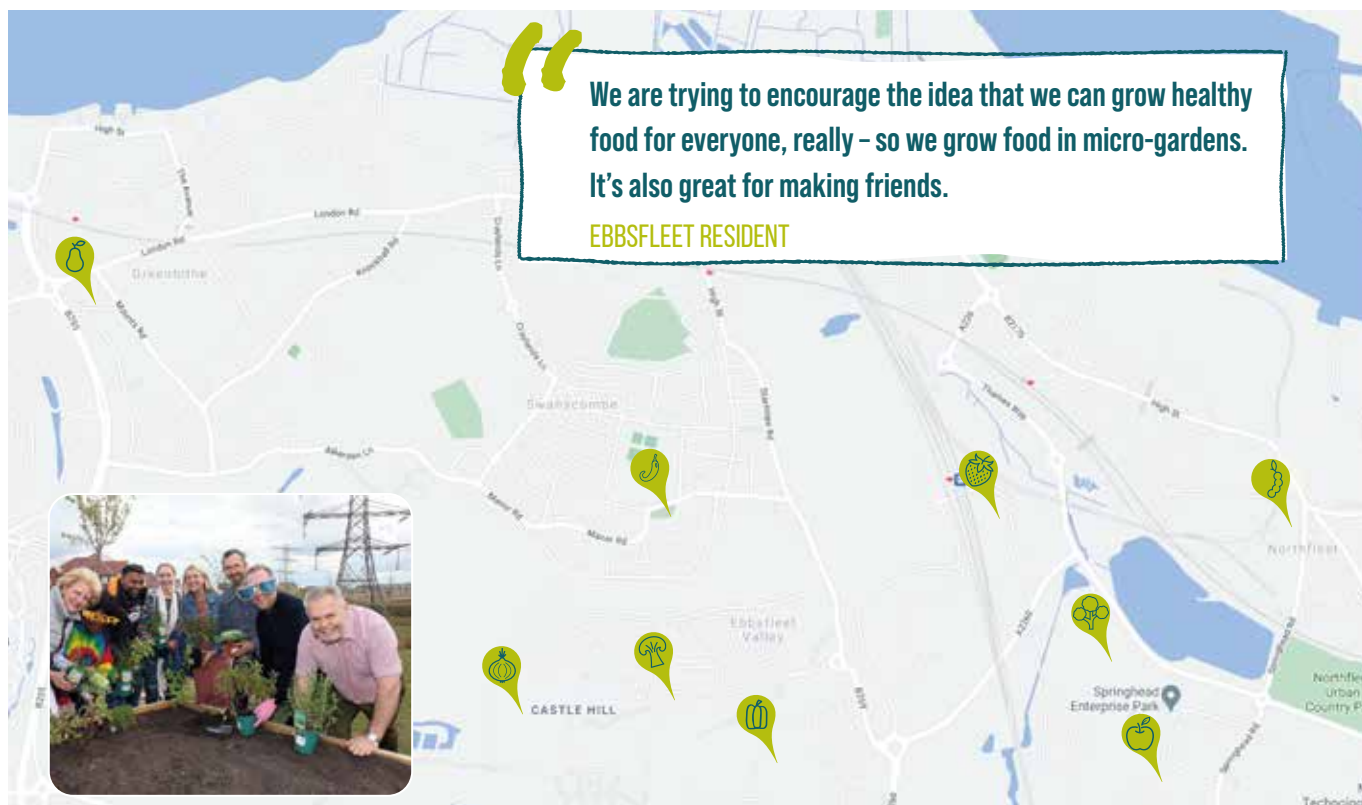


We grow food in the community that people can help themselves to, so we built our own planters that are fully edible – even the trees.










EBBSFLEET RESIDENT

We will be launching a new community growing space at Springhead Park in early 2022.





## Our Edible Ebbsfleet network of garden spaces currently includes;

-  The Enchanted Garden and Secret Garden, The Hill, Northfleet
-  St Mary’s Church, Greenhithe
-  Ebbsfleet International Station
-  St Peter and St Paul Church Centre, Swanscombe
-  Eastgate Community Centre, Springhead Park
-  Ebbsfleet Green Edible Garden
-  A brand new growing space for the community at Mercer Avenue, Castle Hill.
-  A new community growing space at Springhead Park in launching in 2022.
-  New growing spaces at Cherry Orchard Primary Academy, Springhead Park Primary School and Rosherville Primary School.

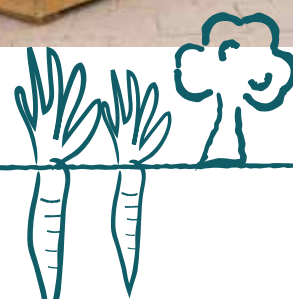
## We want to hear from you!

Ebbsfleet is inspired by the ‘Incredible Edible Network’ which aims to create kind, confident and connected communities through the power of food.

Find out more at: [ebbsfleetdc.org.uk](http://ebbsfleetdc.org.uk)

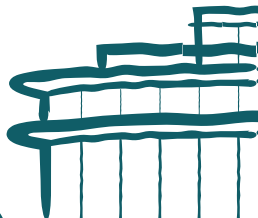
 WATCH THIS SPACE

For an additional community garden and allotment space at Ebbsfleet Green.



# BUILDING THIS CITY FOR YOU

## About Ebbsfleet Development Corporation



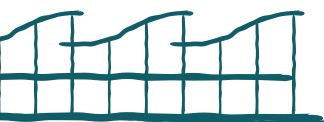
The UK government created us in 2015 and we are tasked with ensuring that the Garden City vision is delivered in good time and of high quality.

As the organisation responsible for growing Ebbsfleet and all that's in it, we want to make sure it's a healthy and dynamic place that's seen as a prime destination for recreation and leisure in Kent.

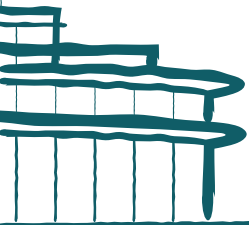
Over the six years that we have been working in Ebbsfleet, we have spoken to thousands of local people and local groups. We commit to continuing this conversation with you to make sure that communities and local people are at the heart of the process of creating Ebbsfleet Garden City.

Our vision is for a new Garden City which places wellbeing, participation and activity at its heart. We want to support the emergence of your thriving new community that embraces its neighbours and gives you access to new social and public spaces. All in all, making Ebbsfleet a great place to live, work and play for the 21st century.

You can find out more about the vision on our website.







DO YOU KNOW...

About the seven major parks in Ebbsfleet? Once completed they'll cover an area double the size of Bluewater!



## History in the making

Ebbsfleet Garden City is located in a pretty special place on the banks of the River Thames, where London meets the Garden of England. Through developing the Garden City, we want to continue the tradition of great placemaking in the UK.

As part of our Healthy New Towns initiative, seven new and upgraded city parks of up to 192 hectares are being created across Ebbsfleet to help foster an inclusive environment, in addition to 15,000 'lifetime homes' in safe and attractive neighbourhoods where residents can choose to live independently at home throughout their life.

This involves combining the best of urban and rural living and building on the ethos and pioneering spirit of Georgian, Victorian and Edwardian planned communities to deliver a new benchmark for 21st century development, including up to 15,000 high-quality new homes.

We have found there's so much to capitalise on here, such as the unique landscapes inherited from the area's industrial legacy, where gorges, bridges, tunnels and clefts connect former chalk quarries. Ebbsfleet now has so much to offer new residents and people of all ages, backgrounds and incomes with parks and open spaces, quality homes and activities to enjoy on the doorstep.

We want you to enjoy a high quality of life here and have everything you need for healthy and successful lives, where new and existing communities come together and have equal access to new facilities and opportunities.



Parks, open spaces, and a multitude of activities on your doorstep.

The main areas being developed include Eastern Quarry (also known as Whitecliffe) alongside Weldon (Ebbsfleet Green), Ebbsfleet Central, Swanscombe Peninsula and Northfleet Riverside. These new areas sit alongside existing communities, namely Greenhithe, Swanscombe and Northfleet.



### **Ebbsfleet Central**

Ebbsfleet Central will become a dynamic new heart for Ebbsfleet, a major commercial hub and a centre of excellence for medical education and learning. This dynamic focus of uses will be supported by a diverse mix of residential, health and leisure facilities, with associated bars, restaurants and convenience shopping to support active and lively streets.



### **Whitecliffe (Eastern Quarry) and Weldon**

To the west of Ebbsfleet Central, Eastern Quarry and Weldon will form a constellation of vibrant urban villages set against the chalk cliffs and waterscapes of the former quarry. The Whitecliffe site comprises Castle Hill, Ashmere (Western Village), Alkerden (Central Village) and Weldon which is situated to the East of Whitecliffe.



### **Swanscombe Peninsula**

A landmark green space for Ebbsfleet, pioneering the sensitive integration of development on the peninsula within an open estuarine ecological park. Alongside regenerated new green spaces, the Swanscombe peninsula is also proposed as the site for the new London Resort theme park.



### **Northfleet Riverside**

Two lively new waterside residential neighbourhoods will be developed along the Thames embankment. These developments will carefully integrate employment spaces within an attractive riverside public realm that provides continuous access to the Thames.



### **Springhead Park**

Springhead Park is home to a primary school and community centre. It's a stone throw away from Ebbsfleet International station and the future city centre (Ebbsfleet Central), which residents can access via Springhead Bridge. Immerse yourself in nature by the hidden riverfront just underneath the bridge. There's plenty of wildlife and the river will become part of one of Ebbsfleet's key city parks in the future.



EBBSFLEET WILL BE A TRULY SPECIAL PLACE TO LIVE AND IS ALREADY A FANTASTIC AND THRIVING COMMUNITY.





## You're in safe hands

Don't worry, we have you covered for the longer term too.

Once our work is done here, the Garden City vision and ambition will be secured by a new organisation, Ebbsfleet Garden City Trust, which will place local people at the heart of decision making and fantastic local services.

The Trust has been set up to be the charitable legacy to make sure everything we've planned still happens when we've completed our early groundwork.

The Trust will play a vital role managing all the new parks and community buildings created in the Garden City, making sure they can be used by everyone in the local community and that they are maintained to high standards for generations to come.

## Ebbsfleet Garden city trust



Community events  
Arts & culture  
Community development  
Work and skills  
Economic development  
Community cohesion



City parks  
Green corridors  
Gateway sites  
Sports Facilities  
Community centres  
Allotments



Public realm  
Local parks  
Play areas



## How will the Trust work?

The Trust was set up in 2021 as an independent charity with its own board of trustees, made up of Ebbsfleet residents and key stakeholders.

From 2022 onwards, all the community allotments, buildings and large parks will be transferred to the Trust to be managed and maintained for the benefit of you, the community.

The Trust will also work with you and the housebuilders to discuss responsibility for the Estate Management Companies, for example. The intention is to ensure consistent high maintenance standards across the Garden City at affordable rates for residents.

It is hoped and expected that the Trust will build on the work currently undertaken by ourselves by promoting civic life, supporting the delivery of community events and helping residents to start and run community groups and activities of your own.

For more information: [egctrust.org.uk](https://egctrust.org.uk)

DID YOU KNOW...

There is a river running through Ebbsfleet?

The River Ebbsfleet is rumoured to have been the first place to commercially grow watercress in Britain.



# CREATIVITY FOR EVERYONE



Ebbsfleet has culture and creativity at its heart. We work with residents, artists, cultural and community organisations to ensure there are lots of creative things for people to get involved in, such as:

## Pop-up cinema nights

Annual creative events showcasing local and national talent

Creative workshops

Clubs and projects



We aim to develop cultural experiences that help define the local identity and also contribute to your quality of life. By combining the existing interests and talents of local people we have ended up with many moments of surprise and wonder over the years.

People need places to go, things to do and ways of meeting others. We try to co-locate cultural and creative facilities within buildings and spaces across the communities in Ebbsfleet so there is space for all interests and talents, whether you're an individual, a group or a professional organisation.



## CONTACT US

If you want to get involved in creative activity, to start something yourself or need creative space to work in, we want to hear from you and will do our best to help make it happen.

## Previous events and projects include;

- Winter and Summer gatherings with performances, arts & crafts and illuminations
- Cloud9 Creative Wellbeing Festival ([cloud9festival.com](http://cloud9festival.com));
- Artist walks, school workshops, film production and dance for early years.

There are ongoing opportunities for the community to lead creative projects and events in collaboration with artists.



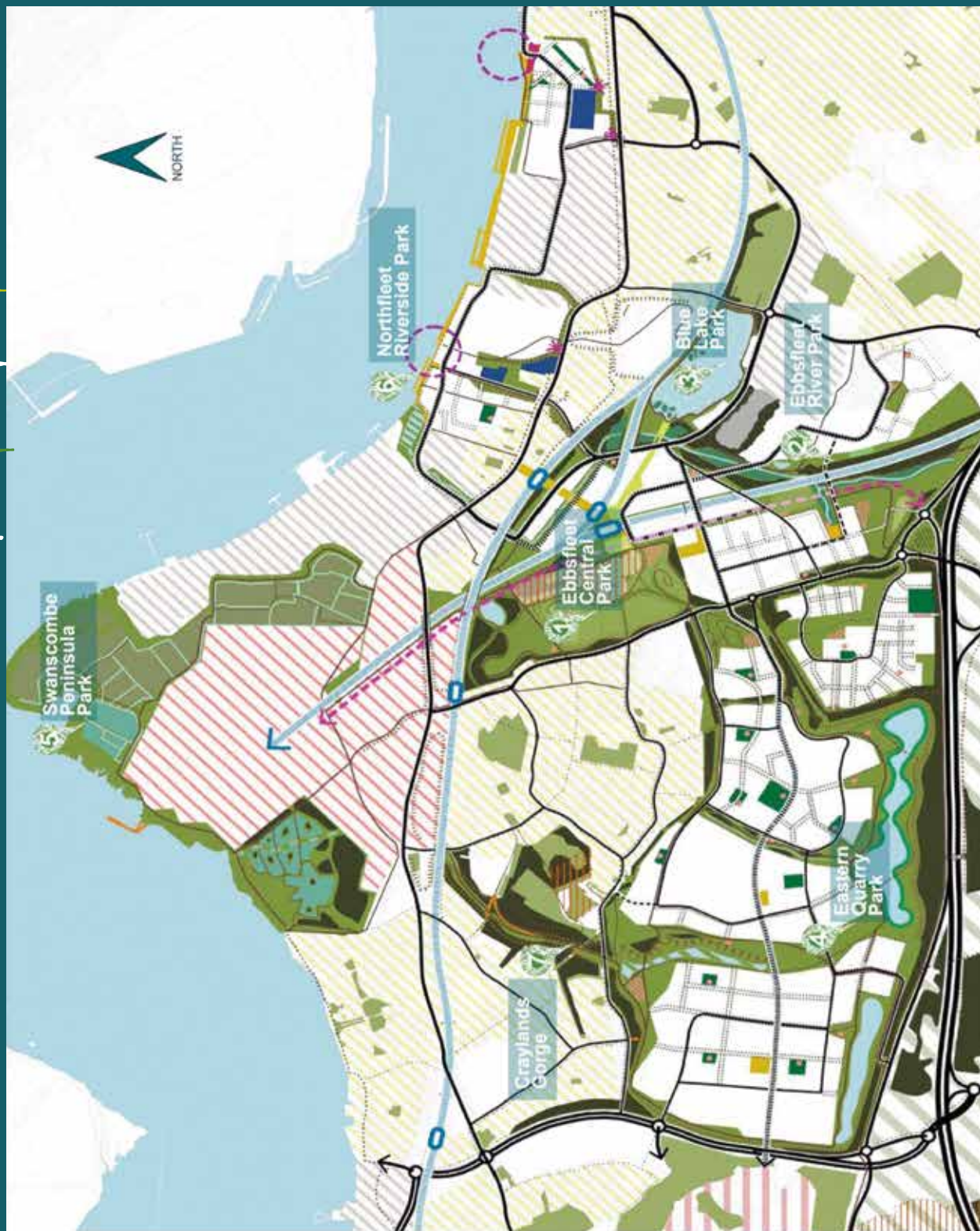




# PUTTING THE GARDEN IN YOUR CITY

## The Garden grid

This plan illustrates the overall vision for the Garden grid network across Ebbsfleet and the surrounding area, providing an integrated and flexible framework that connects landscape, recreation, movement and ecology.



# WHAT IS HAPPENING AND WHEN?



**5** PRIMARY  
SCHOOLS  
**1** SECONDARY  
SCHOOL

Ebbsfleet Green Primary School  
Springhead Park Primary School  
Cherry Orchard Primary Academy  
Rosherville Primary Academy  
Alkerden Primary School  
Alkerden Secondary School



**5** COMMUNITY  
BUILDINGS



**3** GARDEN  
CITY  
PARKS

Castle Hill Lakes  
Ebbsfleet River Park  
Northfleet Riverside park  
(near Harbour Village)



**2** at Ebbsfleet Green  
**1** at Alkerden  
**1** at Castle Hill  
**1** at Springhead Park



# NG

There is so much planned, so we wanted to share with you the key milestones of what you can expect to see built by **2025**.



#### DID YOU KNOW...

The parkland will provide over **25** hectares of open space, walking trails, activity routes and much more?



#### DID YOU KNOW...

That the total size of all proposed parks in the garden city could hold over **300** football pitches!



**3** NEIGHBOURHOOD CENTRES

Castle Hill  
Alkerden  
Ebbsfleet Green



AT LEAST  
**5000**  
HOMES

in Ebbsfleet  
Garden City







GET IN TOUCH



[contactebbsfleetdc@ebbsfleetdc.org.uk](mailto:contactebbsfleetdc@ebbsfleetdc.org.uk)



0303 444 2586

[ebbsfleetdc.org.uk](http://ebbsfleetdc.org.uk)

The Observatory, Castle Hill Drive, Castle Hill, Ebbsfleet Valley, DA10 1EE



@ebbsfleetgardencity



ebbsfleet garden city



ebbsfleetdc